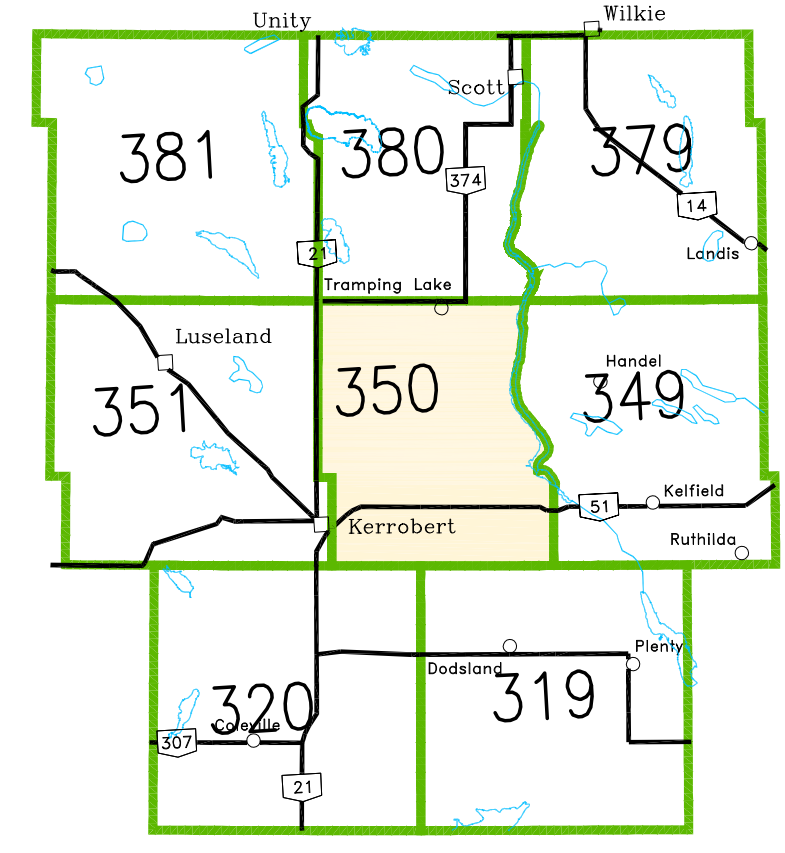
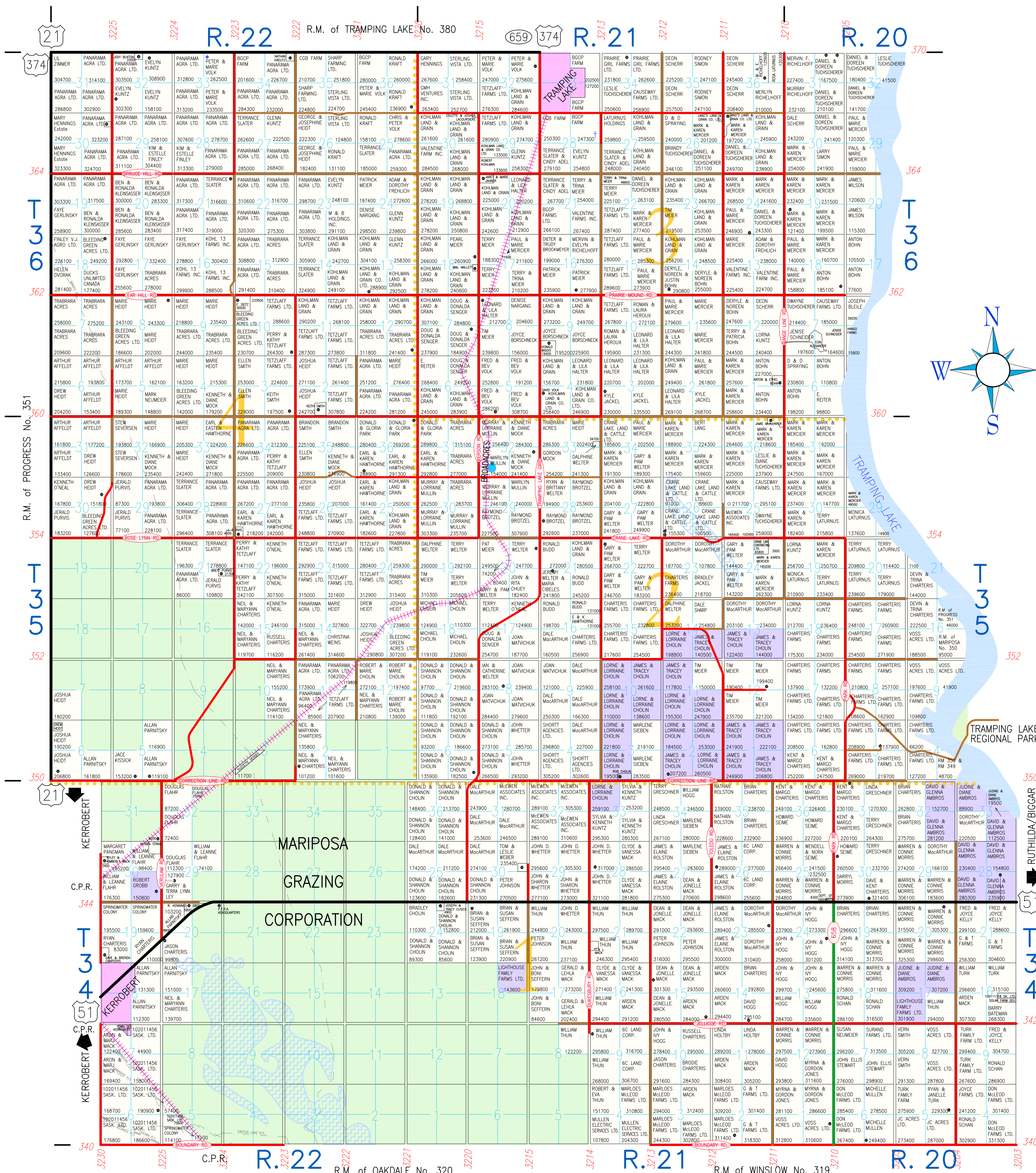


R.M. of Mariposa No. 350



LEGEND

- PROVINCIAL HIGHWAY
- PRIMARY GRID
- GRAVEL ROAD
- DIRT ROAD
- PIPELINE
- RAILWAY
- DIVISION LINES
- TOWN
- WATER/SLOUGH
- ORGANIC LAND
- YARD SITE
- BRIDGE
- CEMETERY
- TOWER
- MUNICIPAL WELL

TAXATION RATES AS OF 2021
 55% OF CULTIVATED LAND ASSESSMENT
 45% OF PASTURE AND RANGELAND ASSESSMENT

West of the 3rd
 Box 228
 603 Atlantic Ave.
 Kerrobert, Sask.
 S0L 1R0
 Ph: (306)834-5037
 Fx: (306)834-5047
 Email: rm350@sasktel.net
 Admin: KATHY WURZ

REEVE
 DALE MacARTHUR, KERROBERT SK.
 COUNCILLORS
 DIV. 1- DAVE CHARTERIS, KERROBERT SK.
 DIV. 2- JEREMY WELTER, KERROBERT SK.
 DIV. 3- WARREN KOHLMAN, TRAMPING LAKE SK.
 DIV. 4- BRAD HEIDT, KERROBERT SK.

MAP DRAFTED: MAR. 1, 2002
 MAP REVISED: SEPT. 1, 2021



BRADLEY DIRECTORIES
 Box 23
 STRANRAER, SASK.
 S0L 3B0
 (306)377-4522

PIPELINES MAY NOT BE EXACTLY AS THEY APPEAR. PLEASE PHONE BEFORE YOU DIG.